

Papamoa Library

and Community Centre

Opening June 2006

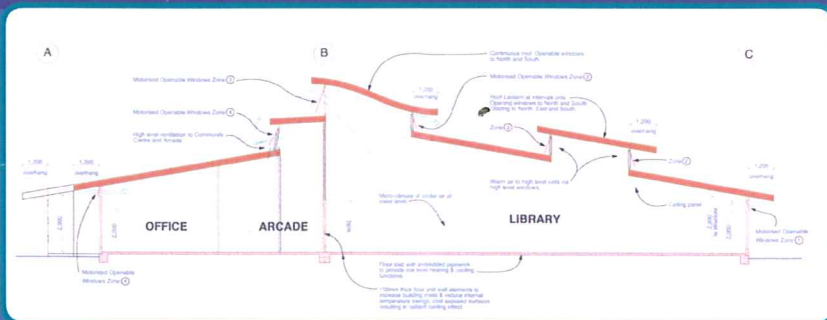
Philosophy

As growth at Papamoa continues, the need for essential services grows.

Planning for a Library for Papamoa started in 2000, with land purchased and capital investment allocated in 2003.

In keeping with the area of Te Akau (the coastline), the building has been designed by architects Chow Hill to fit with the beach, the hills, and the colours of the natural environment.

The sloping curved roof mimics the sand dunes, and raw materials are used extensively - concrete, natural plywood, shell paving, and natural landscaping. The building will house a 974m² Library and a 500m² Community Centre, and is built for expansion in the future if required.



Eco friendly building

Low energy consumption is a key aspect of the building design:

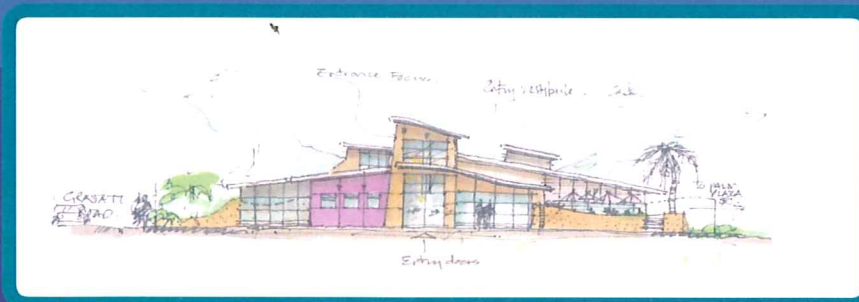
- The shape of the building and roof allow for natural ventilation
- Power consumption is minimised
- Highly efficient light fittings produce high light levels and low heat output
- Thermal mass of concrete in the building maintains an even temperature
- Large roof overhangs limit solar access, with no windows on the western side
- High specification glass allows maximum light with minimal heat transfer
- Water pipes in the floor slab cool or heat the building via a heat pump
- The building management system automatically controls the indoor temperature by opening and closing windows, based on wind speed, rainfall and outside temperature.
- Skylights let more natural light in and promote air circulation at the mid point
- The roof is over-insulated to maintain a consistent temperature inside
- Sensors measure actual light levels, and lights will dim or switch off on bright days
- Rainwater is collected from the roof for flushing toilets, and solar panels provide hot water

Papamoa Library

- The Library collection will hold 40,000 items - books, videos, DVDs, music CDs, games, newspapers, and magazines.
- There will be areas for reading and chatting, watching world news, and studying.
- Plus computers for email, Internet, word processing and gaming.
- A special room adjacent to the Children's and Teens' area will provide space for fun activities and Toddler Time.
- Tauranga Library will provide backup for in-depth Reference enquiries or specific items not held at Papamoa.
- The Library will be open 10am-6pm weekdays and 10am-2pm weekends.

Community Centre

- The Community Centre will complement the Library's focus on learning and passive leisure.
- It will provide spaces for community development and education, with rooms available for hire by community groups.
- The Papamoa Toy Library will operate out of the Community Centre, with hours yet to be finalised.
- A café will be located in the main Reception area.



DAVIS LANGDON

